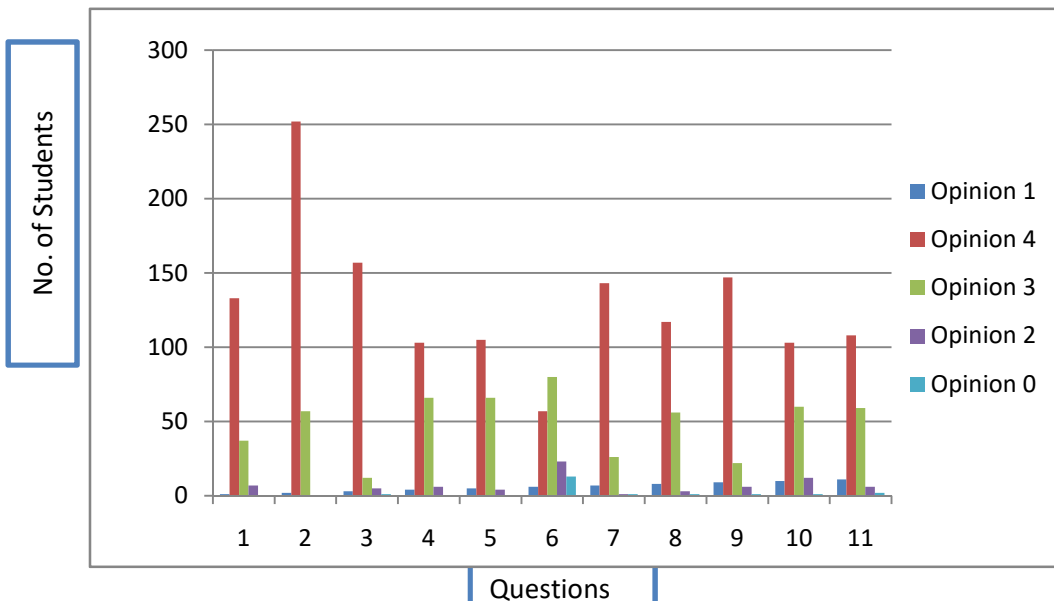


The Patidar Gin Science College, Bardoli

Students feedback analysis Academic year: 2021-2022

Sr.No.	Questions	Opinion of students				
		4	3	2	1	#
1	How much of the syllabus was covered in the class? વર્ગમાં કેટલો અભ્યાસક્રમ ચલાવવામાં આવ્યો છે? 4 – 85 to 100% 3 – 70 to 84% 2 – 55 to 69% 1– 30 to 54% 0 –Below 30%	133	37	7	0	
2	How well did the teachers prepare for the classes? તાસ/વ્યાખ્યાનમાટેની શિક્ષકની તૈયારી કેવી હોય છે? 4 –Thoroughly ઊંડાણપૂર્વક 3 – Satisfactorily સંતોષકારક 2 – Poorly નબળી 1 – Indifferently બેફિકરી 0 – Didn't teach at all વર્ગો જ લેવાતા નથી	252	57	0	0	
3	How well were the teachers able to communicate? શિક્ષક તમારી સાથે કેટલી સારી રીતે વિષયનું આદાનપ્રદાન કરી શકે છે? 4 – Highly effectively ખૂબ જ સારી રીતે 3 – Sometimes effectively ક્યારેક જ સારી રીતે 2 – Just satisfactorily સંતોષકારક 1 – Generally ineffectively મોટે ભાગે બેફિકરી રીતે 0 – Very poor communication અત્યંત નબળું	157	12	5	1	
4	The teacher's approach towards teaching can best be described as ભણવવા પ્રત્યેનો શિક્ષકનો અભિગમ _____ કહી શકાય. 4– Excellent અદ્ભૂત 3 – Very good ખૂબ જ સારો [2 – Good સારો[103	66	6	0	
5	Teachers encourage you to participate in extra-curricular activities. શિક્ષક તમને ઈતર પ્રવૃત્તિઓમાં ભાગ લેવા માટે પ્રોત્સાહિત કરે છે. 4 – Strongly agree યુસ્તપણે સંમત 3 – Agree સંમત 2 – Neutral તટસ્થ 1 – Disagree અસંમત 0 – Strongly disagree યુસ્તપણે અસંમત	105	66	4	0	
6	What percentage of teachers use ICT tools such as LCD projector, multimedia, etc. while teaching. _____ શિક્ષકો ICT tools જેવા કે પ્રોજેક્ટર, મલ્ટીમીડિયા વગેરેનો ઉપયોગ કરે છે 4 – Above 90% 3 – 70 – 89% 2 – 50 – 69% 1 – 30 – 49% 0 – Below 29%	57	80	23	13	

7	The teachers illustrate the concepts through examples and applications. શિક્ષક _____ ઉદાહરણો અને ઉપયોગિતાઓ સહિત સિધ્ધાંતોની સમજૂતી આપે છે 4 – every time હંમેશા 3 – usually સમાન્યરીતે 2 – occasionally/sometime ક્યારેક 1 – rarely ભાગ્યેજ 0 – never કદી નહીં	143	26	1	1
8	The overall quality of teaching-learning process in your institute is very good. 4 –Strongly agree 3 – Agree 2 – Neutral 1 – Disagree	117	56	3	1
9	How much helpful is the environment of the institute to build your academic carrier? 4 – Very much 3 – Somewhat 2 – Neutral 1 – Not that much 0 – Not at all	147	22	6	1
10	What do you feel about the in-campus facilities? 4 – Excellent 3 – Very good 2 – Good 1 – Bad 0 – Very bad	103	60	12	1
11	The institute has well-furnished support facilities - laboratory, library, sports complex, computers, classrooms etc. 4 – Strongly agree 3 – Agree 2 – Neutral 1 – Strongly disagree 0 – Disagree	108	59	6	2

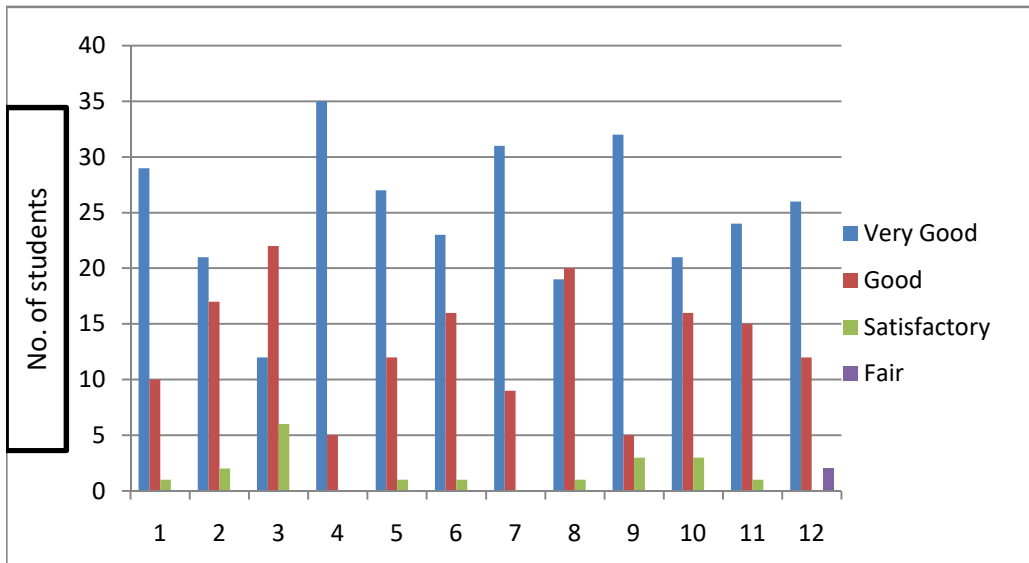


The Patidar Gin Science College, Bardoli

Alumina feedback analysis

Academic year: 2021-2022

Que. No.	Nature of Question	Opinions of Answer			
		A	B	C	D
		Very Good	Good	Satisfactory	Fair
1	The extent to which the syllabus is meeting the industrial/professional needs.	29	10	1	0
2	Rate the institute takes active interest in promoting internship, projects undertaken, field visit Opportunities.	21	17	2	0
3	Rate the institute takes active interest in promoting internship, projects undertaken, field visit Opportunities.	12	22	6	0
4	Rate the quality of learning I had at the college is useful in my career.	35	5	0	0
5	Admission Procedure	27	12	1	0
6	Fee structure	23	16	1	0
7	Environment	31	9	0	0
8	Infrastructure & Laboratory facilities	19	20	1	0
9	Faculty	32	5	3	0
10	Training & Placement	21	16	3	0
11	Library	24	15	1	0
12	Overall Rating of the College	26	12	0	2



Questions

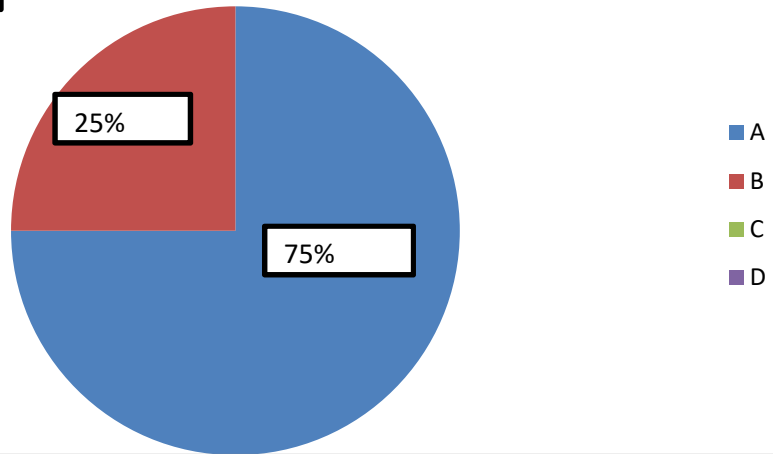
The Patidar Gin Science College, Bardoli

Teacher feedback analysis

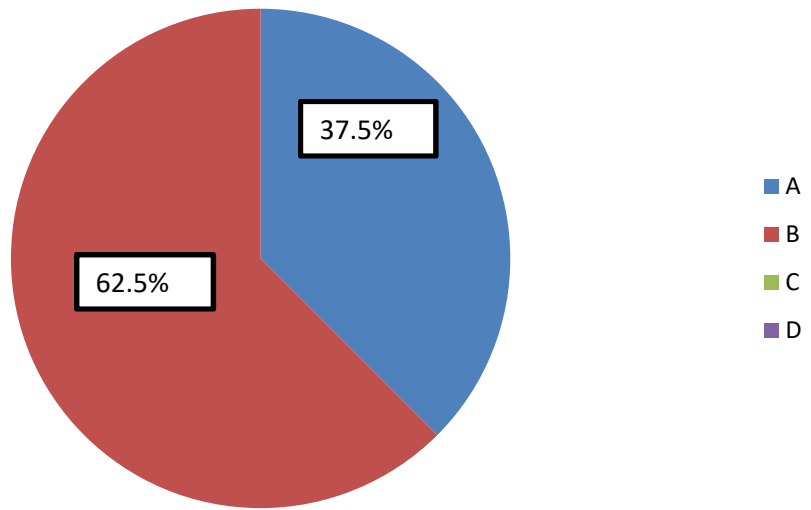
Academic year: 2021-2022

Que. No.	Nature of Question	Opinions of Answer			
		A	B	C	D
		Strongly Agree	Agree	Partially Agree	Not Agree
1	The syllabus is designed in a way to inculcate scientific temper, democratic, moral, social and spiritual values in the minds of learner	12	4	0	0
2	The syllabus is sufficient and efficient to bridge the gap between industry standards, current global scenario and academics.	6	10	0	0
3	The timely coverage of syllabus is possible in the allotted number of teaching hours.	8	5	3	0
4	The curriculum is designed to promote student centric methods, such as experiential learning, participative learning and problem solving methodologies for enhancing learning experiences.	8	8	0	0
5	The college library has adequate and relevant books of your subject are available.	13	3	0	0
6	The syllabus designed for the preparation of competitive examination.	5	11	0	0
7	The syllabus designed in a way to improve Employment.	11	5	0	0
8	The syllabus is mapped with vision and mission of	9	7	0	0
9	The curriculum has been updated from time to time.	10	6	0	0
10	Suggestions if any				

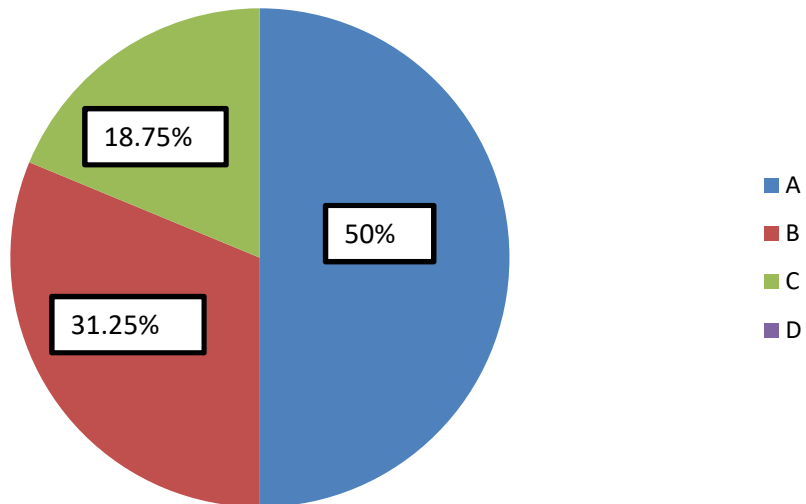
Question 1



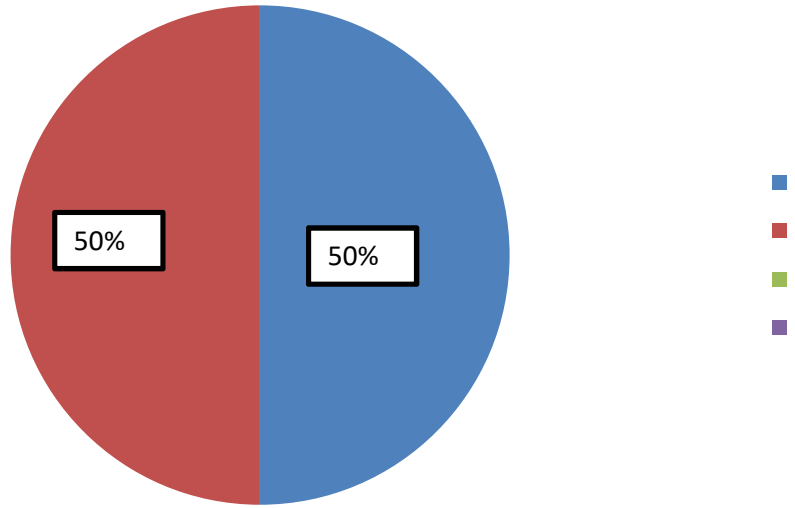
Question 2



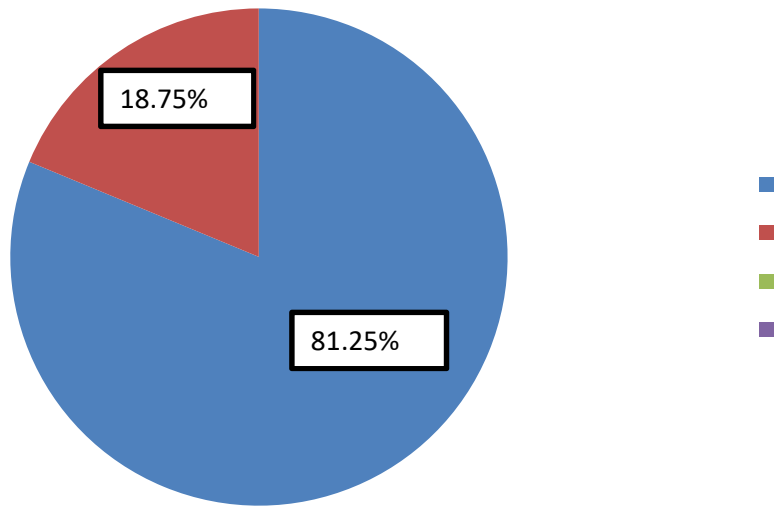
Question 3



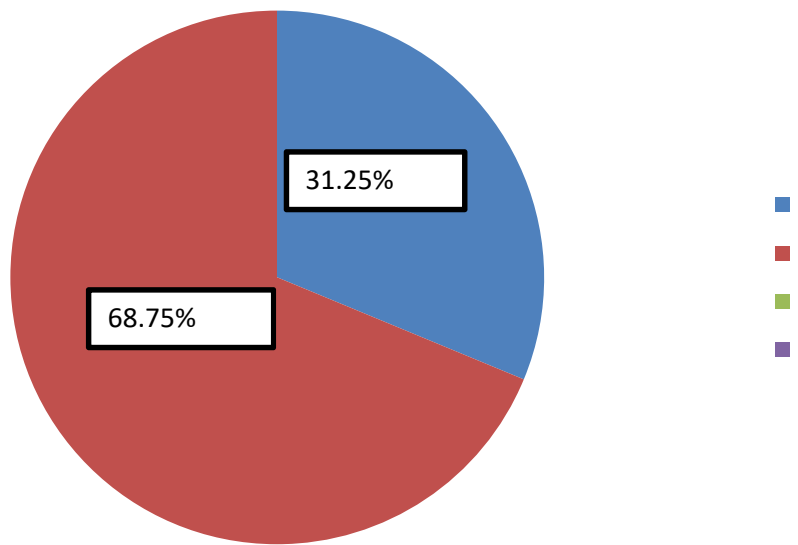
Question 4



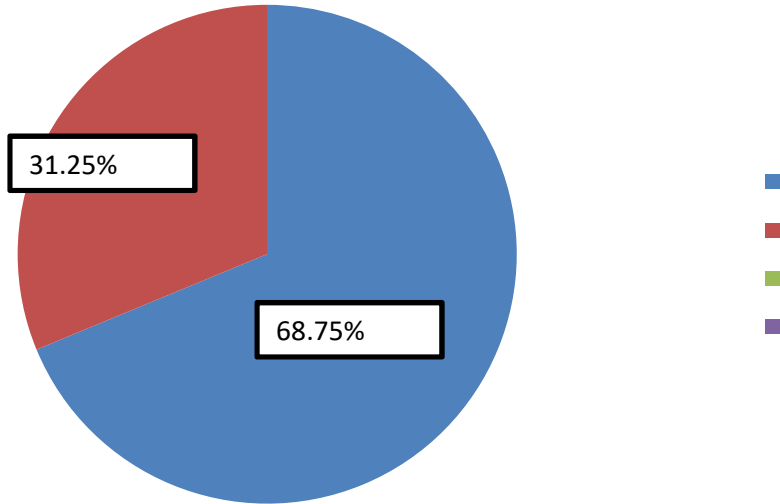
Question 5



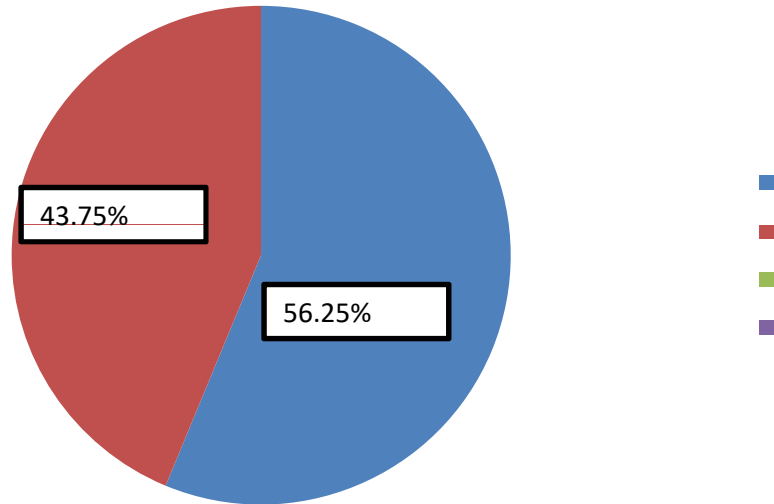
Question 6



Question 7



Question 8



Question 9

